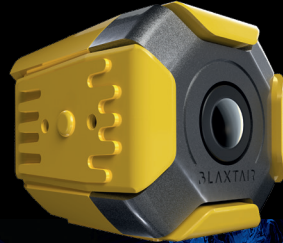


BLAXTAIR ORIGIN®

YOUR TARGET:
ZERO ACCIDENTS

PIONEER OF PEDESTRIAN
PROXIMITY DETECTION



ROBUST AI CAMERA:

- Detect & localize people to prevent collisions
- Monitor & reduce your risk of accidents

BLAXTAIR HAS BEEN SAVING
LIVES FOR 12+ YEARS



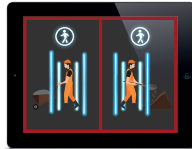
Integrated cloud-based
solution 'Blaxtair Connect'

Blaxtair Origin
prevents pedestrian/vehicle
collisions and saves lives



THE MOST ADVANCED PEDESTRIAN DETECTION SOLUTION

- The only industrial-grade AI camera able **to detect and localize pedestrians in real time**.
- Alerts the driver to the danger and helps to **prevent serious accidents** on industrial sites.
- **No pedestrian tags** needed.
- Able to detect **any postures** (i.e standing, crouching, or in partial view) to prevent collisions with vehicles, whether **driving forward or in reverse**. Set up a proper danger zone distance for your fleet.



COMPACT, ROBUST & EASY TO INSTALL

- Industrial-grade solution, operational in **harsh and tough environments**, e.g. strong vibration, high impacts, wide temperature variance (-40°C to +85°C / -40°F to +185°F).
- **Waterproof and dustproof** (IP69K sensor head).
- Compatible with **all types and brands of industrial vehicles** (forklift trucks, wheel loaders, excavators, etc.)
- **Compact and easy to integrate**.
- **Future-proofed**: online maintenance & remote software updates.



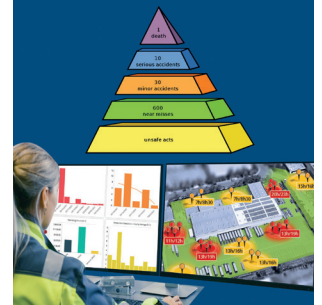
INCREASED PRODUCTIVITY & BETTER WORKING CONDITIONS

- Generates **only relevant alerts** for the driver, avoiding nuisance alarms and alarm fatigue.
- **Avoids** incurring **costs** related to downtime, workplace accidents or fatalities.



INTEGRATED CLOUD-BASED SOLUTION 'BLAXTAIR CONNECT'

- **Monitors & reduces risk of accidents**.
- Highlights **the most dangerous machines** and determines **the time and place where the risk of accident is highest**.
- **Measures the effectiveness of the preventive actions implemented** to prevent accidents between vehicles & pedestrians.



HOW TO GET BEST-IN-CLASS EDGE AI & DETECTION PERFORMANCE ?

- Industrial **market leader** in pedestrian detection.
- **12+ years of experience** in Artificial Intelligence and vision based pedestrian detection on the field.
- **High edge processing power**.
- **Unique & large learning dataset** for feeding AI algorithms.
- Arcure Blaxtair is a **member of the working group to create the first AI certification**.
- **12,000+ Blaxtair** in operation in 2022.
- **2000+ industrial sites equipped** in 50 countries.

BLAXTAIR ORIGIN: MAIN COMPONENTS

- 1 **Sensor head**: captures images.
- 2 **Processing unit**: recognizes and localizes people in danger thanks to AI algorithms.
- 3 **LCD screen or Flash Beacon**: alerts the driver by a visual and audible alarm when people are detected on the trajectory of the machine, at the rear as well as at the front of the vehicles.
- 4 **Customized interface**: Pedestrians can also be alerted thanks to voice buzzers or customized accessories.



Authorized dealer:



69, de la Seigneurie Blvd East, Blainville, QC, Canada, J7C 4M9
1-800-648-8132 - rmtequip.com