

**TRACKVISION™**

WE KEEP AN EYE  
ON THE ROAD  
FOR YOU

ADVANCED VISIBILITY SOLUTIONS  
FOR TRUCKS



**BACKUP  
CAMERAS**



**CONNECTED  
DASHCAM**



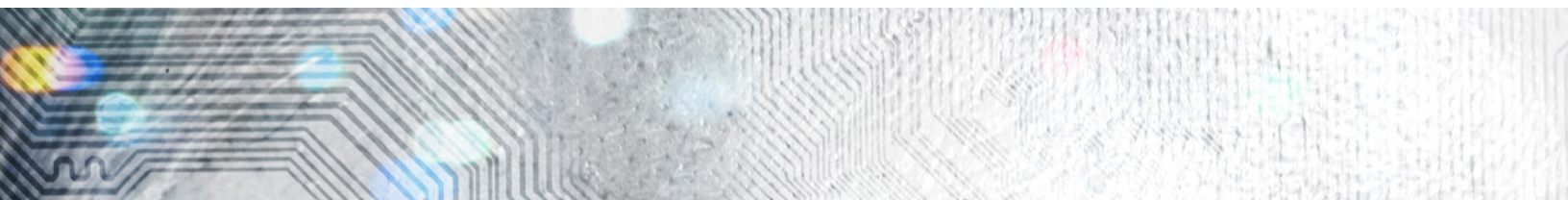
**FLEET  
MANAGEMENT**



**BACKUP  
RADAR**



**DVR  
RECORDER**



# TRACKVISION™

## Find your camera solution

Developed from our vast experience in the transportation industry, the TrackVision brand offers industrial-level HD cameras and reversing radars capable of continuous operation under all conditions. Developed to the highest standards, TrackVision visibility solutions have been designed to optimize the safety and efficiency of transport operations, while improving cabin ergonomics and user experience.



TRV11604



TRV10465



TRV10590



TRV05003



TRV02500



# TrackVision 7" Quad Zoom PRO Set



Simple view



Dual view



Quad view



Zoom

Reversing  
marker

Waterproof



Dust resistant

Vibration  
resistant

## A high definition image with zoom on embedded!

The new TrackVision Quad Zoom PRO provides high definition vision, while incorporating our renowned ruggedness to withstand the worst road conditions. The camera transfers a clear image to the touch screen monitor. When certain reversing conditions require it, it is possible to activate the digital zoom by simply pointing at the screen!

The TrackVision monitor can display up to 4 camera images. Whether single, double, triple or quadruple, you can switch from one mode to another depending on the visibility required. For semi-trailers, spiral cables with connectors are available and we also offer the wireless option with the camera-monitor transmitter and receiver duo.

### KIT INCLUDES

1. **TRV11601** TrackVision monitor PRO 7" AHD-Quad-Touch-Zoom-Waterproof
2. **TRV10540** TrackVision camera PRO 150° AHD-1080P-IR-Microphone
- › **TRV14310** Cable camera PRO 10M/32F M/F waterproof



### KEY FEATURES

- › Specially designed for highway trucks
- › Quad view display with digital zoom
- › HD waterproof monitor with touch screen
- › 1080P camera with microphone
- › Trailer kits available for semi-trailer
- › Wireless transmitters available
- › Easy to use and install

### OPTIONS

#### Cables for cameras

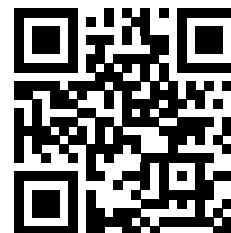
- › TRV14305 Cable camera PRO 5M/16F M/F waterproof
- › TRV14310 Cable camera PRO 10M/32F M/F waterproof
- › TRV14315 Cable camera PRO 15M/49F M/F waterproof

#### Tractor/trailer kit

- › TRV14628-1 TrackVision PRO Trailer set, 1CAM-10M/32F spiral-1M/3F cable connector. Including :
  - TRV14625-1 TrackVision PRO spiral cable 1M/3F expandable 10M/32P
  - TRV14628-1M Socket curl PRO cable+1M/3F cable male monitor
  - TRV14628-1F Socket curl cable+1M/3F cable female camera

#### Wireless kit

- › TRV15227 TrackVision RX-TX set for analog camera 2.4GHz
- › TRV10531 TrackVision camera 120° Analog-IR-Micro for TRV15227-T



**SPECS SHEET**

# TrackVision SnapCam Set



Simple view



Dual view



Reversing marker



Waterproof



Dust resistant



Vibration resistant

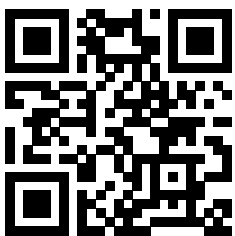
## See what you want, where you want!

SnapCam from TrackVision has been designed when camera position is critical and needs to be moved frequently. Thanks to the innovative SnapCam incorporating a strong built-in magnet, easing its positioning on metallic structure. The waterproof monitor has a powerful antenna and can manage up to 4 wireless cameras. Features like split screen is available to monitor 2 views at the same time.

The autonomy can go up to 10 hours of continuous usage depending on the ambient temperature. Wireless fixed camera, also available, can be coupled with TrackVision wireless monitor and innovative portable battery pack is available to give you more flexibility.

### KIT INCLUDES

1. **TRV11705** TrackVision monitor 7" Wireless-Analog-Dual view-4 inputs-Waterproof
2. **TRV11726** TrackVision SnapCam 120° Wireless-Battery-Magnet-IR-Micro



**SPECS SHEET**

### KEY FEATURES

- › Auto-pairing for convenient use
- › USB charging camera
- › HD waterproof monitor
- › Low power consuming when standby
- › Transmission range up to 100m
- › Easy to use and install

### TRV11737

#### Wireless Camera & Magnet battery pack

- › TRV11736 TrackVision camera 120° Wireless-Analog-4IR-Micro
- › TRV11741 TrackVision battery pack with built-in charger for TRV11736



TRV11736



TRV11741

# TrackVision RadCam 3Z Set



Simple view



Dual view



Quad view



Reversing marker



Waterproof



Dust resistant



Vibration resistant

## Take control of your truck's environment!

RadCam from TrackVision detects stationary objects and people in the detection field within 200 milliseconds, up to 10 meters away. This advanced system alerts the driver with visual and audible warnings. Divided into three color-coded areas on the display, the potential hazard is easy to identify and helps the truck driver to maneuver safely.

The system's ability to detect only the approach of an object from the sensor limits the number of false detections caused by unimportant objects in the detection zone. The industrial grade system is waterproof to IP69K standard and works well in all weather conditions.

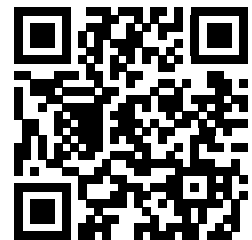
### KIT INCLUDES

1. **TRV10482-K** TrackVision monitor 3Z 7" AHD-Quad-Radar-Waterproof
2. **TRV131150-K** TrackVision camera 3Z 150° AHD-1080P-10IR-Microphone
3. **TRV10510-K** TrackVision radar 3 zones with bracket
  - › **TRV15115-K** Cable camera 3Z coax 15M/49F M/F waterproof
  - › **TRV14115-K** Cable camera analog-radar 3Z 15M/49F M/F waterproof



### KEY FEATURES

- › Backup radar with 3 zones
- › Selectable modes zones
- › Up to 10 meters detection
- › Waterproof and high-definition monitor
- › 1080P AHD Camera with heated infrared
- › Quad view display
- › Audible alarm on detection



SPECS SHEET

ALSO AVAILABLE!

## TrackVision Backup Radar Set Series 2

### KIT INCLUDES

- TRV10501** TrackVision detection indicator + radar 3 zones (Series 2)
- TRV14225** Cable camera analog-radar 3Z 9M/29F M/F Waterproof+Flex



SPECS SHEET

# TrackVision connected 4G event recorder Set



Full HD



Connected



Built-in GPS



Built-in G-shock



Waterproof



Dust resistant



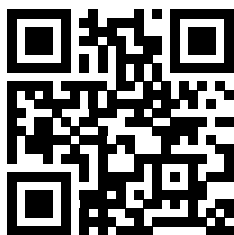
Vibration resistant

## Realtime recording that ease fleet management and reporting

This TrackVision set is a full HD 1080P ruggedized, 5-channel mobile digital recorder (MDVR) designed for vehicle surveillance and monitoring, with built-in connectivity, advanced video compression, GPS positioning technology for live tracking and WIFI for wireless data upload. The MDVR fully integrates with TrackVision's platform and has a built-in three-axis G-shock sensor as standard, offering full driver behaviour reporting

### KIT INCLUDES

- › DVR
- › Cellular + GPS antennas
- › Monitor
- › 4 Cameras



**SPECS SHEET**

### KEY FEATURES

- › Industrial design with 1TB storage
- › Multiple camera realtime recording\*
- › Automated incident downloading
- › Web portal for viewing events\*\*
- › Realtime email notifications
- › Fleet management reporting
- › 4G, LTE connectivity\*\*
- › GPS tracking

\* Sold separately.

\*\* Monthly fees apply.

# TrackVision connected 4G DashCam Set



Full HD



Connected



Built-in GPS



Built-in G-shock



Waterproof



Dust resistant



Vibration resistant

## AI-powered vehicle camera with fleet management

DashCam from TrackVision set combines a next generation 4G vehicle camera with the power of artificial intelligence (AI). The advanced video telematics solution has been specially developed for commercial vehicle operations to help reduce fleet risk and prevent incidents before they happen. This means transport business can effectively improve safety by reducing the frequency and severity of collisions.

Using the latest AI technologies – including Advanced Driver Assist System (ADAS) and Driver Status Monitoring (DSM) – the TrackVision DashCam detects both hazards on the road and high-risk driver behaviours. The ADAS camera identifies lane departure, forward collisions and tailgating, while the in-vehicle monitor can recognise if a driver is tired or distracted by actions such as mobile phone use, smoking and eating. This means a driver can immediately be alerted to potential dangers, while an office-based fleet manager can monitor areas of concern both in realtime and historically.



### KEY FEATURES

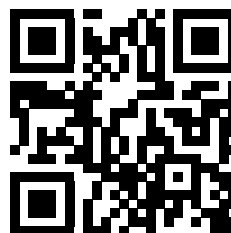
- › Specially designed for highway trucks
- › Realtime recording /viewing\*
- › Automated incident downloading
- › Web portal for viewing events\*\*
- › Realtime email notifications
- › Fleet management reporting
- › 1080P resolution
- › 4G, LTE, GPS technologies\*\*

\* Sold separately.

\*\* Monthly fees apply.

### OPTIONS

- › Rear view camera
- › DSN camera



**SPECS SHEET**



# A WORLD OF PRECISION

- We develop products and technological solutions that integrate weighing and vision to optimize transport truck operations.

**ALL THE EXPERTISE YOUR NEED,  
AT YOUR FINGERTIPS**

Also available, ask about TrackWeight Onboard Truck Scales.

YOUR TRACKVISION DEALER:

**TRACKVISION™**  
track-vision.com

TrackVision, TrackWeight are registered trade mark of RMT Equipment Inc, Blainville, Qc, Canada