



Tramp Metal Detection System
Application Analysis Form

Fax back to us at: 450-963-7331

Processing plant
Address
City
Contact person
State
Title
Zip Code
Phone

Material :

Processed material
Capacity (TPH)
Average burden depth
Size
Maximum burden depth
Magnetic
Conductive

Tramp :

Trouble size
Specify minimum catch size

Belt :

Belt width
Belt speed
Average coast distance
Metal splices or repair clips used ?
Skirts used ?
Core: Fabric, Steel
Fixed, Variable
Traverse distance (max.)
Yes, No
Material : Yes, No

General :

Power : 115 VAC, 230 VAC, Other
Phase
Hertz

Variation maximum/Minimum voltages

Detector location :

Detection coils station : Indoors, Outdoors, Underground

Controller enclosure : Indoors, Outdoors, Underground

Required cable length between coils and controller (25ft. provided)

NEMA Requirements (NEMA 12 standard; other optional)

Class
Division
Group (s)



Conveyor

Idler Manufacturer _____

Model or type _____

Idler spacing _____ inches

Trough at _____ degrees

Roll diameter _____ Equal rolls

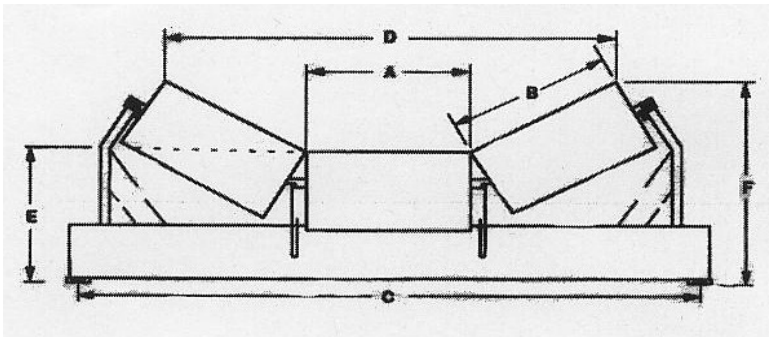
Unequal rolls

Type of frame Cable

Rigid

Covered Open

Incline _____ degrees



A = _____
 B = _____
 C = _____
 D = _____
 E = _____
 F = _____

Optional equipment requirements :

- Backlit LCD, Model #4095
- Splice detector inductance coil, Model #2050 or #2055
- Coast alarm, Model #1030
- Long bar detector, Model #1040
- Metal marker - Flag drop Model #2075
- Metal marker - Pneumatic/liquid Model #3025
- Remote reset - Model #2200 or #2230
- Alarm horn - 120 DB Model #3010
- Rotating alarm Beacon Model #3015 (blue or am
- Shift register Model #1050
- Single-unit coil system Model #2060
- Extra cable _____ feet
- Other _____

Signature

Date